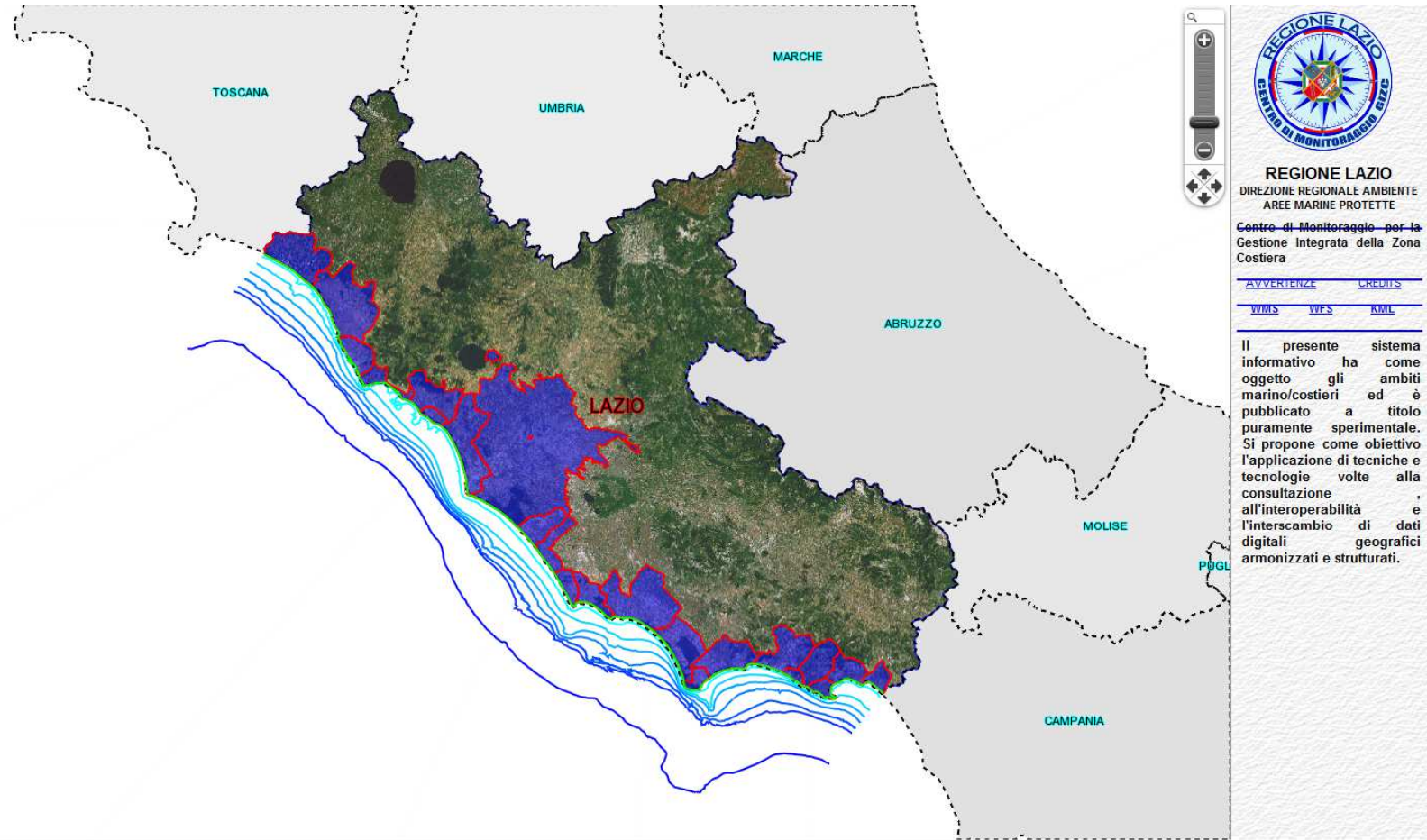


REGIONE LAZIO (IT): Geographical information



24 coastal Municipalities

351.539 km coast length
60% beach
28% rocky coasts
12% artificial coasts

212.076 km of beaches
56% erosion
37% stability
7% aggradations

5,3 millions inhabitants
900.000 coastal population

8 ÷ 10 Millions m³ of sediments for
eroded beaches reconstruction

300.000 m³/year for maintenance