



Presentation of the Department of the Environment and Housing - Catalan Government -

MAREMED Kick off meeting

Mireia Cañellas

Sustainable Development Responsible

Environmental Policies and Sustainability General Direction

Marseille, 22 - 23th of June 2010

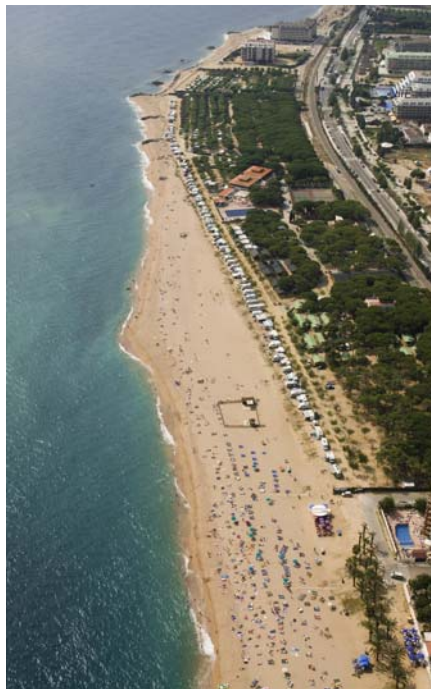
INDEX

- The Catalan littoral as a key territory sight
- View on the Environmental diagnosis of the Littoral
- Governance figure
- Good practices as background
- The Coastal Information System of Catalonia: IDEC-LITORAL

<http://www.geoportal-idec.cat/idecostes/index.jsp>

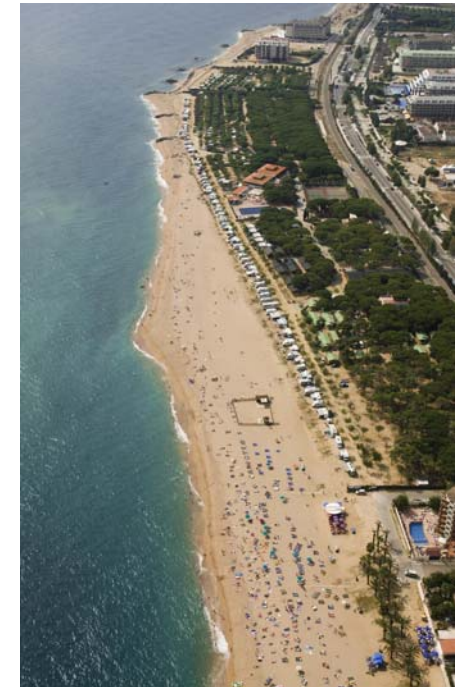
The Catalan littoral as a key territory sight

- Areas of high natural, socioeconomic and cultural value
 - Both land and marine valuable areas
 - Sociocultural elements: lighthouses, traditional coastal routes, archaeological sites, etc.
 - Base of essential economical activities: tourism, fishing activities, agriculture, aquaculture, etc.



The Catalan littoral as a key territory sight

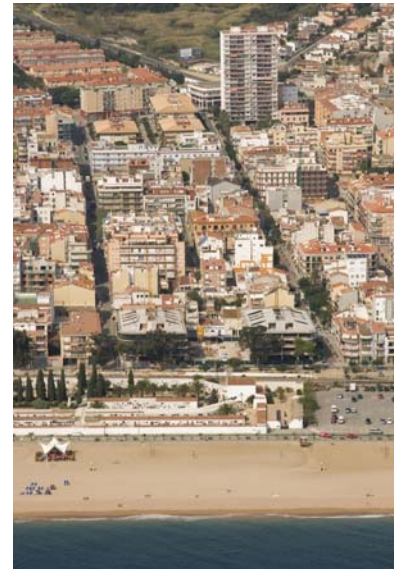
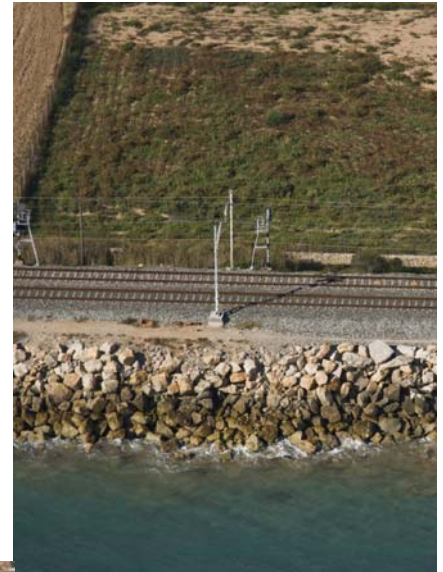
- Areas of high natural, socioeconomic and cultural value
 - Both land and marine valuable areas
 - 12 Areas of Natural Interest + 80.000 ha into the Natura 2000 network + 3 Natural Areas with Special protection Areas (Ebro Delta, Medes-Montgrí-Baix Ter, Cap de Creus)
 - Socio-cultural elements: lighthouses, traditional coastal routes, archaeological sites, etc.
 - Base of essential economical activities: tourism, fishing activities, agriculture, aquaculture, etc.



- High anthropogenic pressure
 - 780 Km of coastline with a 32 % of artificialization
 - urbanised areas: 70 municipalities, with 3,2 million people (44% population)
 - density of infrastructures
 - occupation of Sea-Land Public Domain
 - exploitation of natural resources

The Catalan coast as a key territory sight

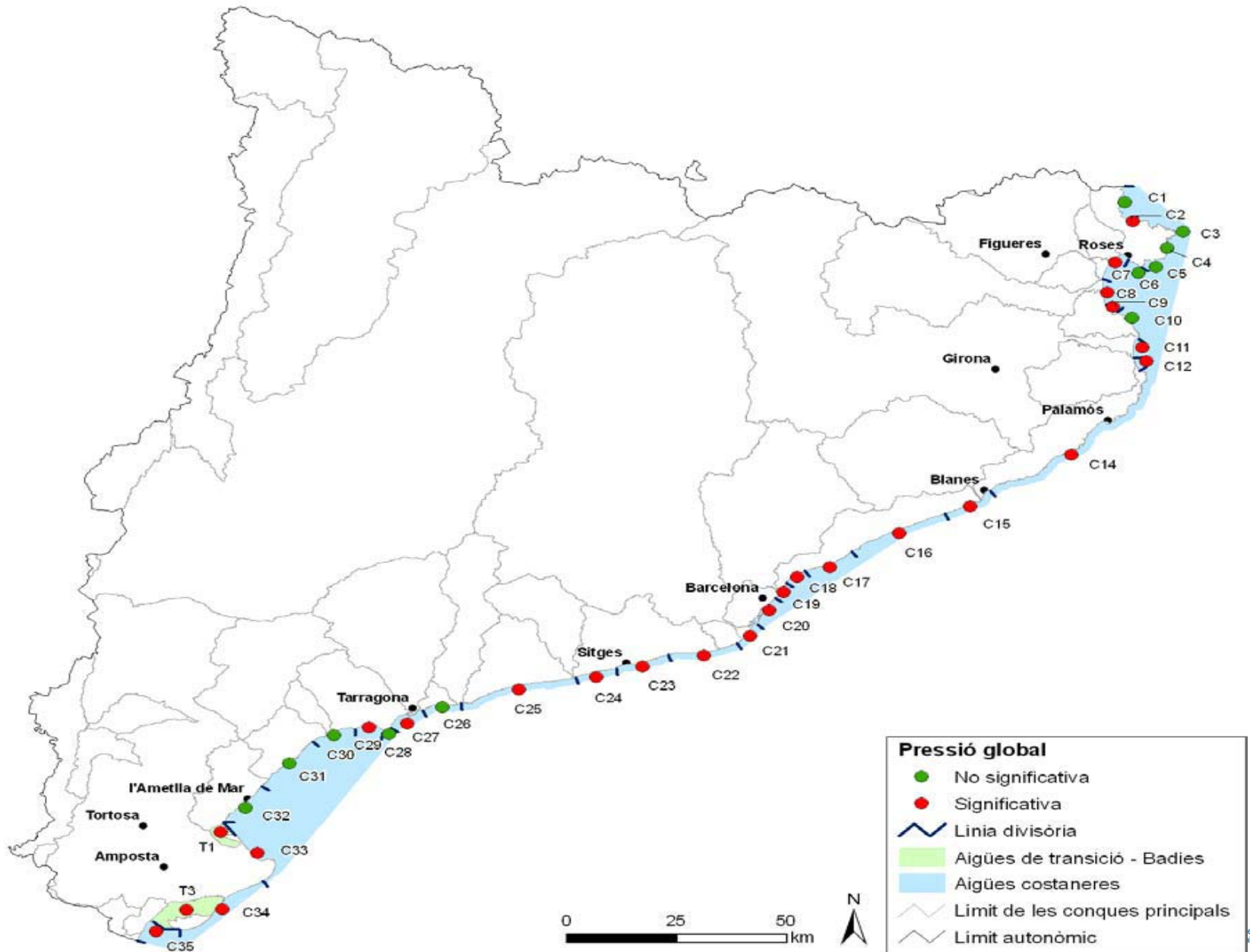
- From challenges to tools to guarantee:
 - The landscape protection
 - The ecological restoration
 - The urban planning
 - Climate change mitigation and adaptation: sea level rise of 0.7-1.5mm/year
 - The activities' economic development
 - Littoral erosion: 1m/year
 - The efficient transport
 - The promotion of culture
 - The social cohesion
 - The transfer of knowledge + research and innovation
 - And in general terms, the IMCZ



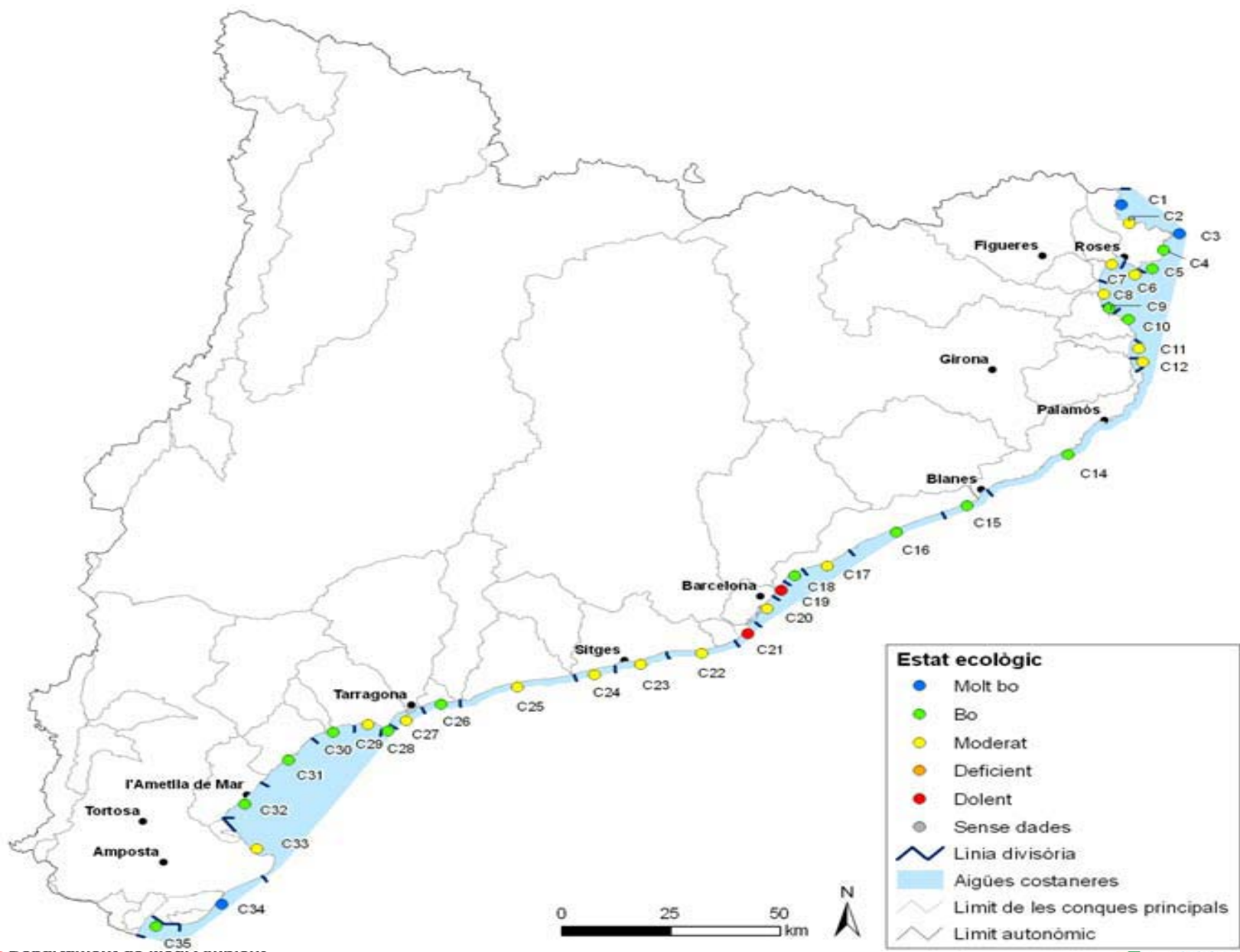


Environmental diagnosis of the Littoral

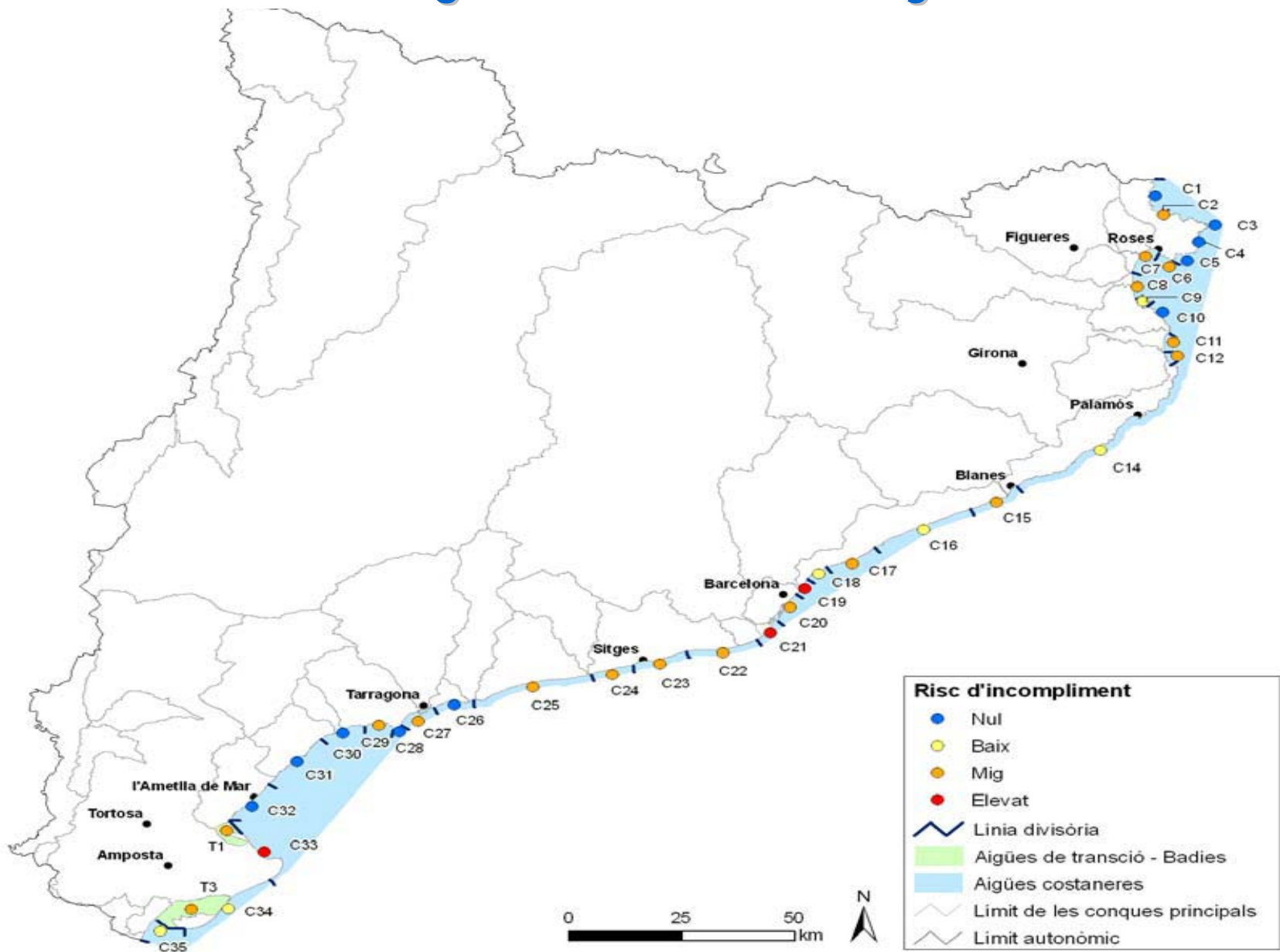
Global anthropogenic pressure



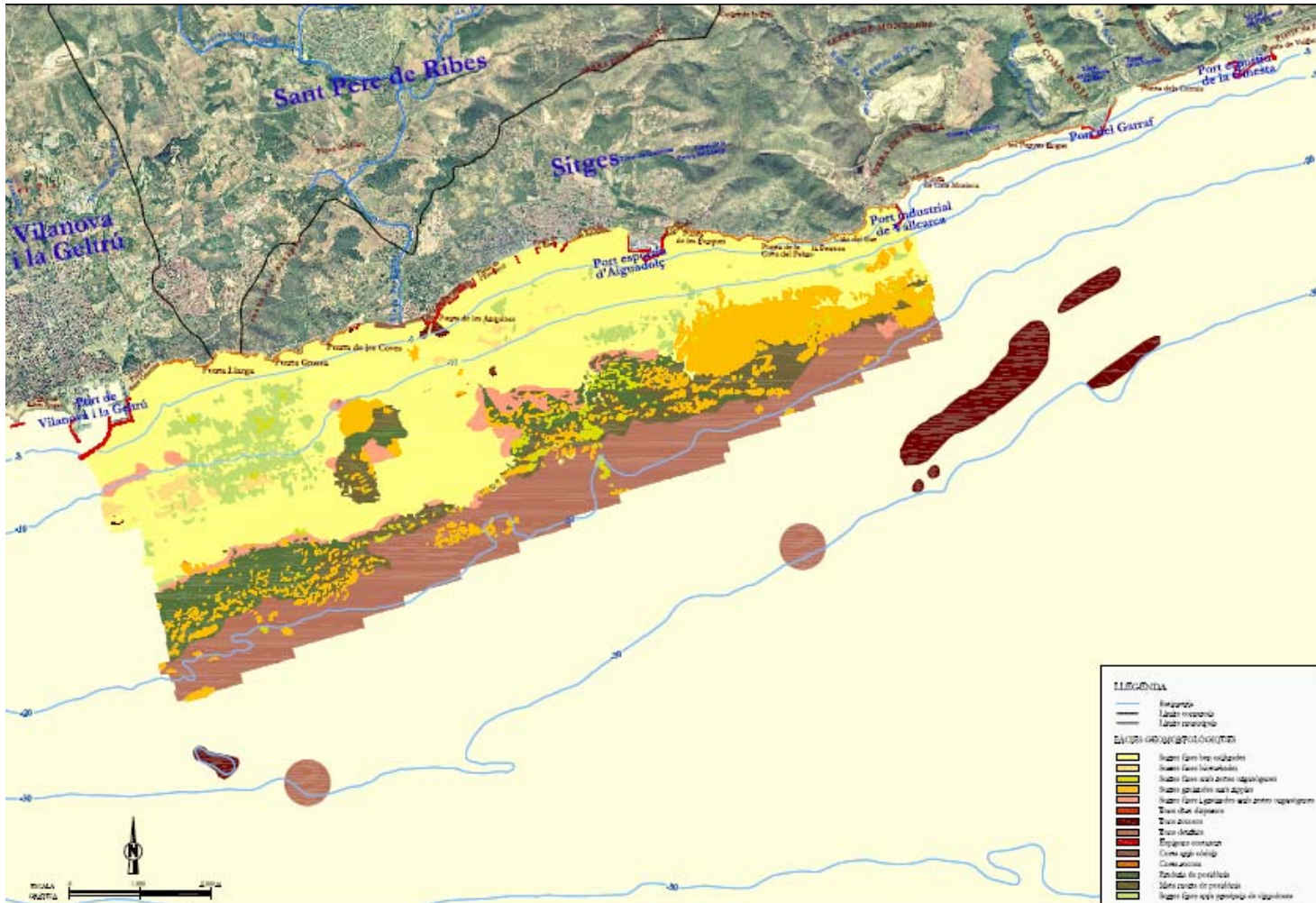
Ecological state of water masses



Risk of falling to meet WFD objectives

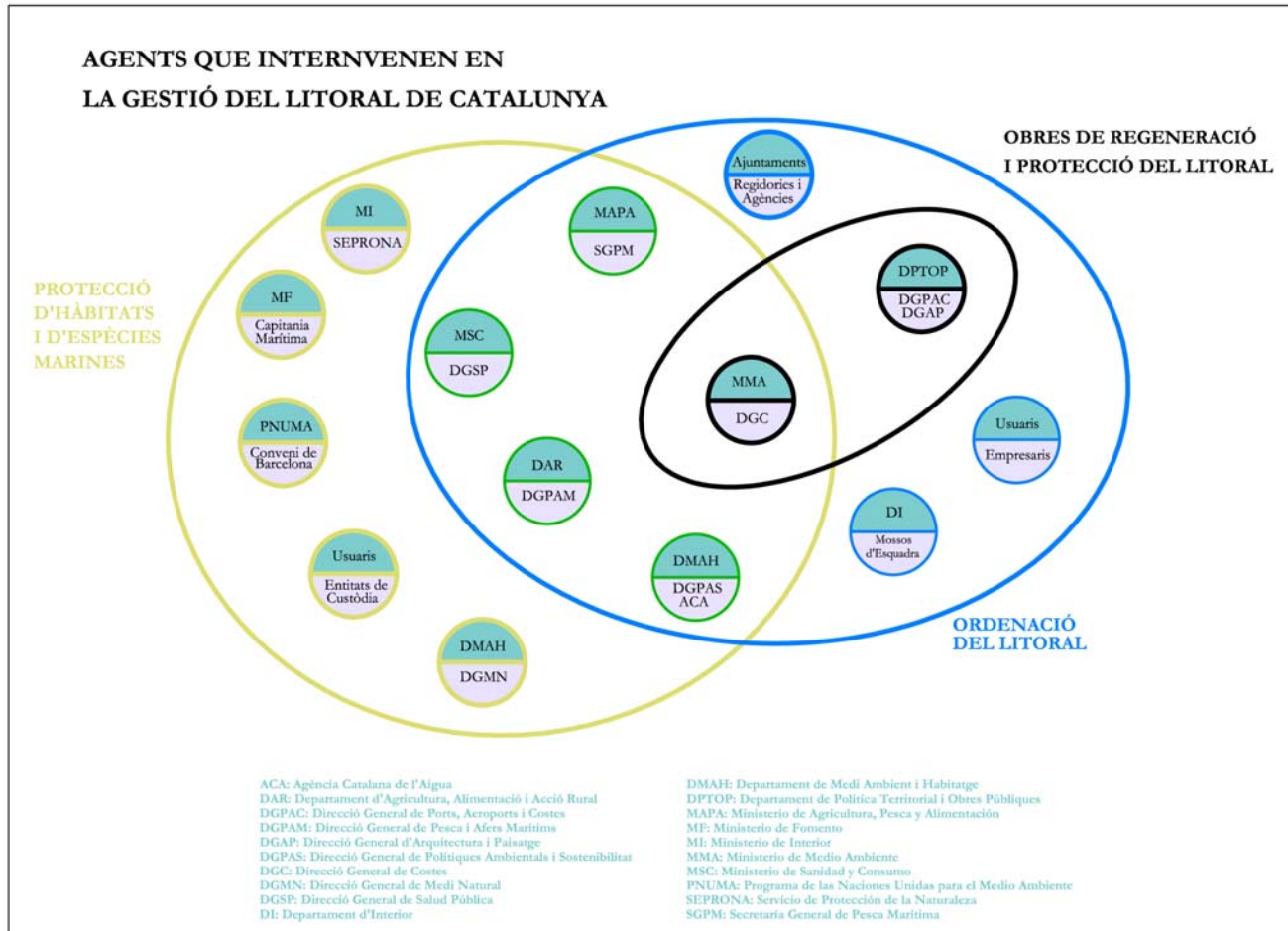


Benthonic communities



<http://aca-web.gencat.cat/aca/appmanager/aca/aca/>

Governance figure



Good practices as background

- **Program on the surveillance and information on the state of the art of both beaches and interior waters**

The Catalan Water Agency (ACA) realizes periodically beach inspections, weekly analyzes the waters and publishes the results to the public opinion and the local authorities. There is a working commission which makes the coordination of ACA with the local administrations easier and allows finding new approaches and joint solutions for the latest season problems

Development of a Environmental Research and Innovation Plan

- **Consorti Colls i Miralpeix - Garraf Coast**

It constitutes an example of coastal area where integrated management is applied. The Consortium was created to carry out a sustainable coastal, marine and terrestrial management in the region of Garraf, to contribute to its biological connectivity with the Garraf Park and Foix Park.

- **Marine custody agreements**

The marine custody is a volunteer process between a land trust entity specialized on marine issues and, either the competent administration or any marine users to preserve the marine environment

NEED FOR AN INTEGRATED AND GLOBAL VIEW



MAREMED AS AN OPPORTUNITY

Thank you for your attention

Department of the Environment and Housing
Catalan Government
Av. Diagonal 523-525, 2
08029 Barcelona
Tel. (+34) 934 44 50 00 ext. 2218
A/e: mireia.canelles@gencat.cat
<http://mediambient.gencat.cat/cat/inici.jsp>