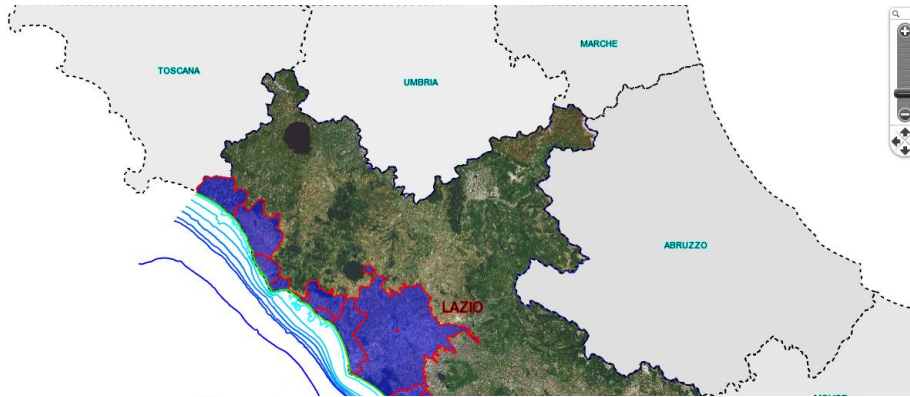


REGIONE LAZIO (IT): Geographical information



REGIONE LAZIO
DIREZIONE REGIONALE AMBIENTE
AREE MARINE PROTETTE
Centro di Monitoraggio per la
Gestione Integrata della Zona
Costiera

Il presente sistema informativo ha come oggetto gli ambienti marino/costieri ed è pubblicato a titolo puramente sperimentale. Si propone come obiettivo l'applicazione di tecniche e tecnologie volte alla consultazione all'interoperabilità e all'interscambio di dati geografici armonizzati e strutturati.

24 coastal Municipalities

351.539 km coast length

60% beach

28% rocky coasts

12% artificial coasts

212.076 km of beaches

56% erosion

37% stability

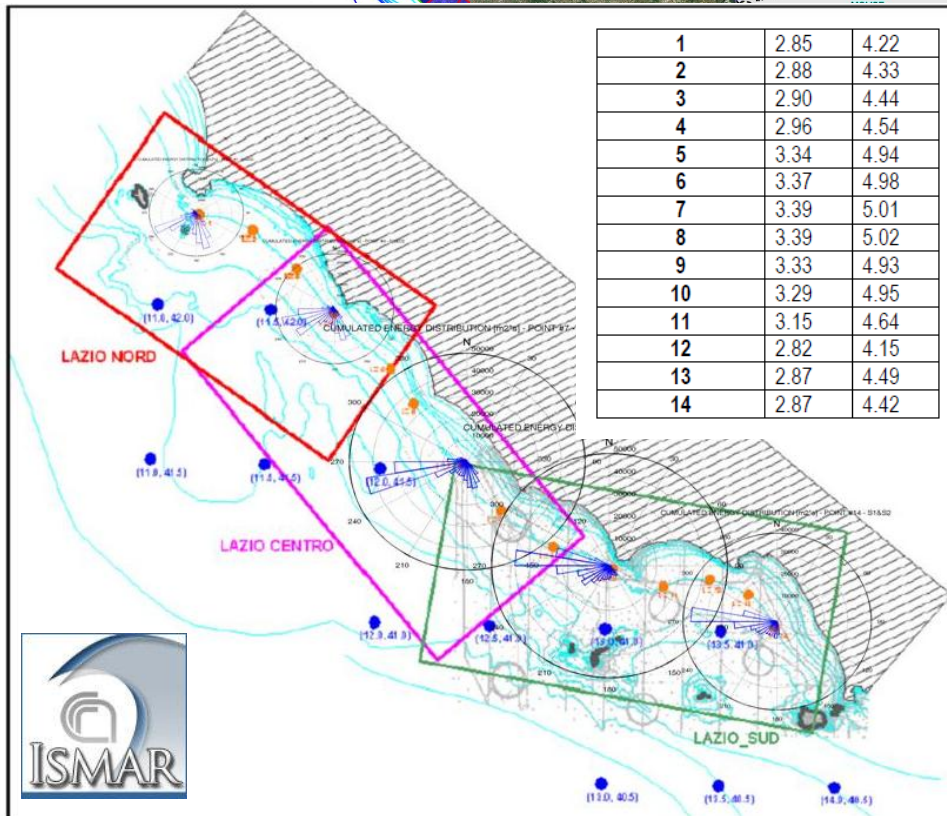
7% aggradations

5,3 millions inhabitants

900.000 coastal population

8 ÷ 10 Millions m³ of sediments for eroded beaches reconstruction

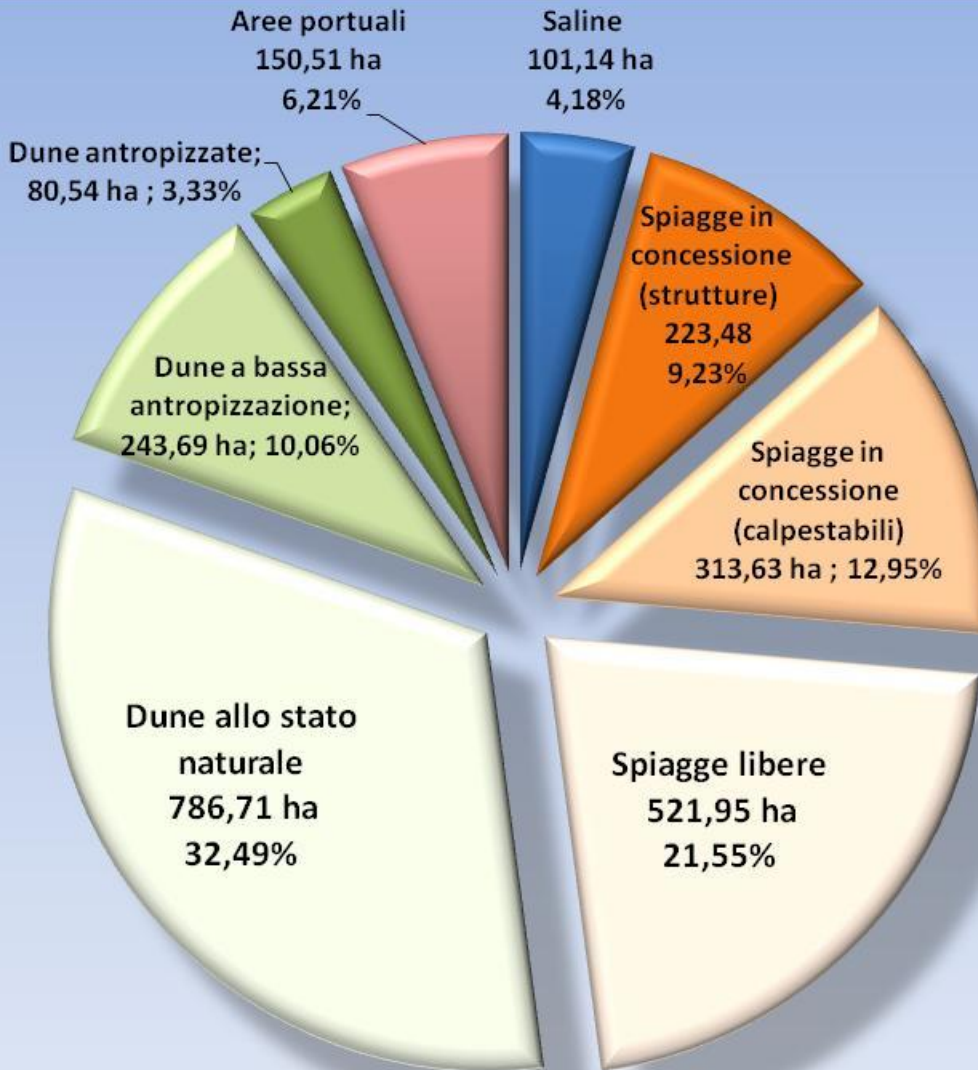
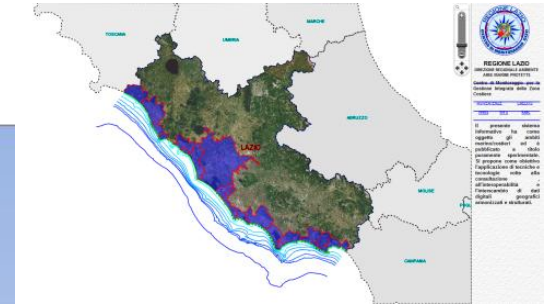
300.000 m³/year for maintenance



Significant High wave (m) with 7 days duration (column 2) and 1 day duration (column 3) at a depth of -100.

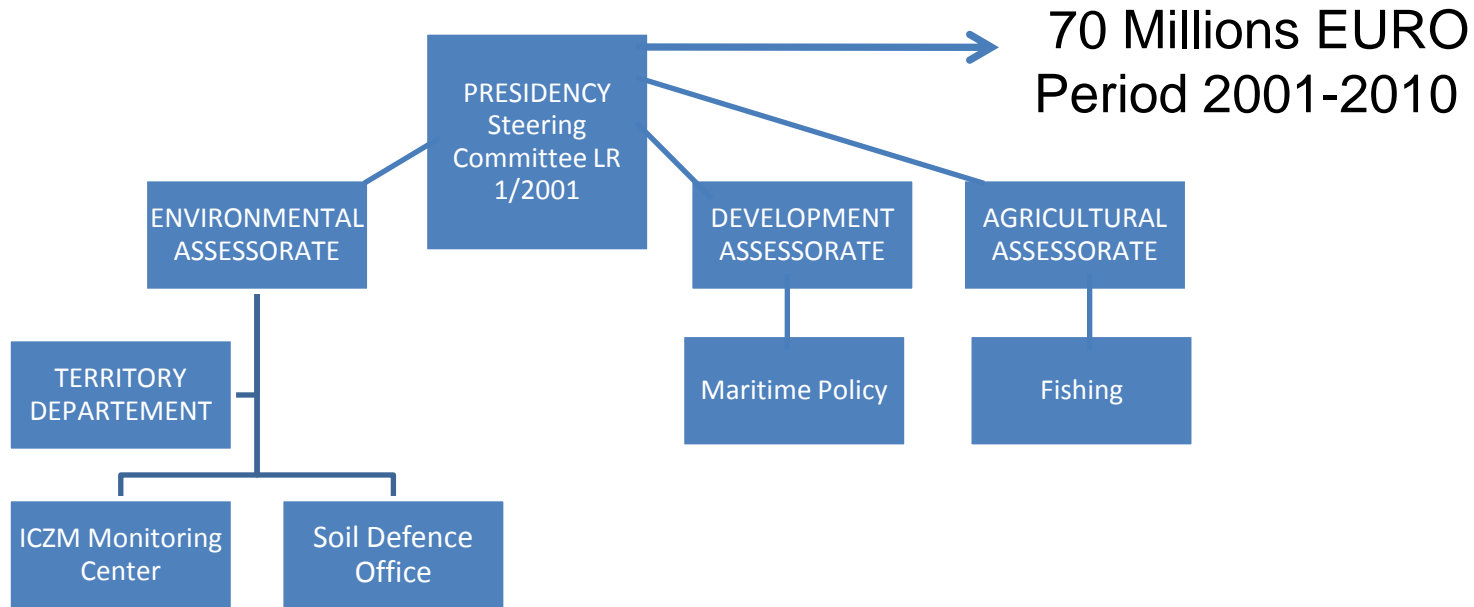


REGIONE LAZIO (IT): Geographical information

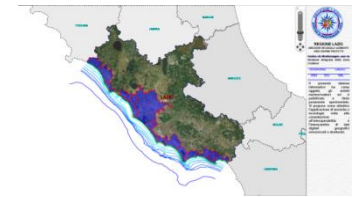


REGIONE LAZIO
Stato del Demanio
Marittimo
(2005)
Tot. = 2.400 ha

REGIONE LAZIO (IT): Governance and budget



REGIONE LAZIO (IT): Tools



The constitution of ICZM Monitoring Center is approved by DET. DIR. of 22nd october 2007.

- Monitoring on marine environmental aspects
 - ICZM
 - European Projects
- WEB GIS is available on

www.cmgzic.info

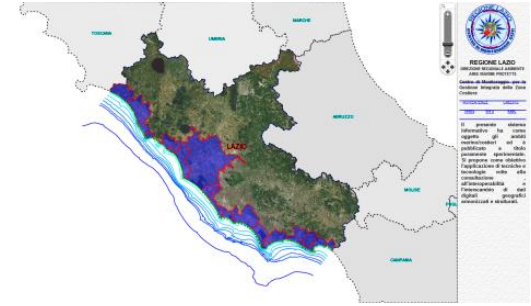
- WEBCAM
- DOWNLOADS
- MARINE HABITATS
- CONVENTIONS
- EVENTS
- WEB GIS
- NEWS
- EU PROJECTS



**Six
monthly
news
bulletin**

REGIONE LAZIO (IT): WEB GIS

Consultations, Interoperability, Sharing of geographic digital data harmonization



REGIONE LAZIO DIREZIONE REGIONALE AMBIENTE GESTIONE AREE MARINE PROTETTE Centro di Monitoraggio GIZC	
Infodati	
Codice Intervento:	ID-49
Comune:	Fondi
Rif-Toponomastico:	F. Canneto Tre Truglia
Titolo Progetto:	
Stralcio:	
Volumi versati (m3):	110.000
Impresa Esecutrice:	
Anno inizio lavori:	2000
Anno fine lavori:	236.05
Da Prog.:	249.85
a Prog.:	
Tipologia intervento:	

WEBGIS Structure

- Administration levels
- Cartography
- Altimetry
- Littoral hydrology
- Coastal uses
- Shorelines
- Marine Environment
- Protect coastal area
- Marine constrains
- Marine geology
- Interventions & Works
- Ortho-photo

Standard

.WMS

.WFS

.KML

...following INSPIRE Directive