



# The Development of the EU Adaptation strategy

**MAREMED – European Parliament**

***Rosario Bento Pais***  
***Head of Unit, DG Climate Action***

Brussels, 21 March 2013

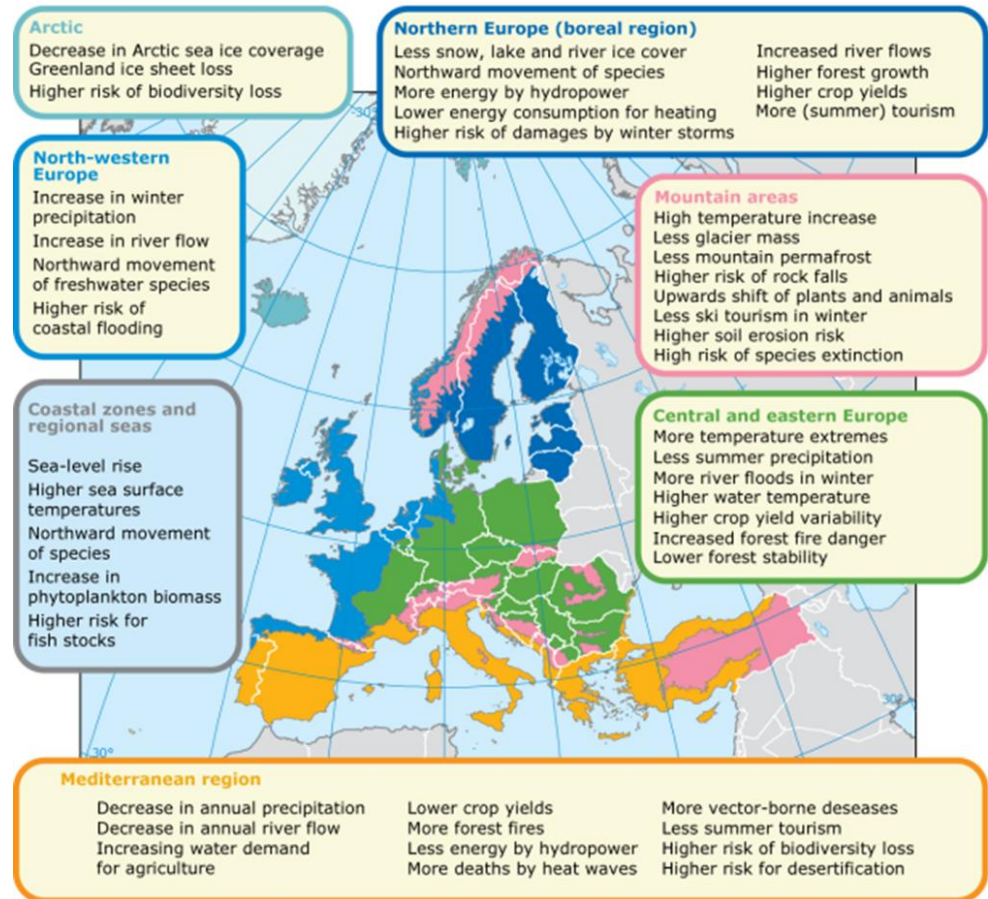
# Expected future impacts

The EU is already facing **unavoidable impacts of climate change**

**Impacts** will affect the full EU territory, with regional differences

Sea level rise, increasing temperatures and changes in precipitation and flood patterns have impacts on **coastal areas**

Effective adaptation action can **reduce** overall damage **costs, save lives** and **natural** and **human assets**.



# Multi-faceted impacts - integrated approach

## Adaptation is necessary in most sectors

- Agriculture, rural development, forestry
- Ecosystems, biodiversity, soil
- **Water, marine systems**
- Infrastructure: construction/buildings, transport, energy

## Cross-sectoral issues

- Social dimension: migration, health, employment...
- Territorial dimension: cities, coastal areas, mountains, ...
- Transboundary dimension: governance and cooperatio

# Adaptation

- ❑ **We need to adapt.** Adaptation is inevitable (delayed impact of emissions). Adaptation is cheaper *1€ invested in flood protection saves 6 € damage costs.*
- ❑ Postponed adaptation and maladaptation will lead to higher damage costs.  
*≥ 100 bn/year by 2020; 250 bn/year by 2050 for the EU*

# Need for an EU Adaptation Strategy

- **why adaptation at EU level?**
  - transboundary impacts, transnational action
  - impact in European policies, single market
  - solidarity with the most impacted regions
- **European added-value**
  - common framework, guidance and tools
  - integrated cross-border solutions where required
  - experience exchange and knowledge sharing

# EU Strategy on adaptation to Climate Change

- **General aim:** enhancing the preparedness and capacity to respond to the impacts of climate change in the EU, its Member States and regions, down to local level by:
  - Enhancing knowledge generation and its dissemination: ensuring better-informed decision-making
  - Increasing the resilience of the EU territory: Facilitating cooperation with and between Member States, regions, cities and other relevant stakeholders
  - Increasing the resilience of key vulnerable sectors: Mainstreaming adaptation into different EU policies and better capturing the potential of the private sector

# Building on the success of CLIMATE-ADAPT

- **CLIMATE-ADAPT is an online platform, providing access to**
  - adaptation information in Europe
  - EU sector policies information
  - information on countries, cities and other areas (search function for 'similar' regions with similar challenges and projects)
  - extensive database on adaptation (publications, research projects, guidelines, tools, indicators, maps, organizations,...)
  - tools that support adaptation planning
- Launched in March 2012
- **<http://climate-adapt.eea.europa.eu>**





**Adaptation support tool**

New to adaptation?  
Use the Adaptation Support Tool

What are European countries doing?

Choose your country

## Climate Change

The European Climate Adaptation... in adapting to climate change. It i... users to access and share information on...

**Adaptation resources for EU policy Sectors, including Infrastructure.**

**3 key tools have been developed for CLIMATE-ADAPT**

- Adaptation support tool
- Case study search tool
- Overview of countries activities

Find case studies on adaptation in Europe

Share your information

## News



- » Adaptation in Scotland – ASC assessment
- » Environment Agency to invite you to participate in adaptation research
- » Adaptation reporting power – final tranche of reports published

## Events



- » Planet under Pressure, 26-29 March 2012, London
- » Earth Systems Engineering 2012

## EU sector policies



Agriculture & Forestry  
» [Read more](#)



Water management  
» [Read more](#)

» [View all sectors](#)

## EU information systems







# EU Adaptation Strategy: mainstreaming in EU funds

## EC's proposal for 2014-2020:

- 20% of the EU budget for climate-related expenditure
- Tracking of climate-related expenditure
- Mainstreaming of climate action in the Cohesion Policy and Research & Innovation
- New proposed climate sub-programme in LIFE+ (363 Mio. € for adaptation)
- European Maritime and Fisheries Fund (EMFF) and International Fisheries Agreements / RFMOs) – total proposed budget: €6.7bn

# Thank you!

For more information:

<http://ec.europa.eu/clima/sites/change/>

