

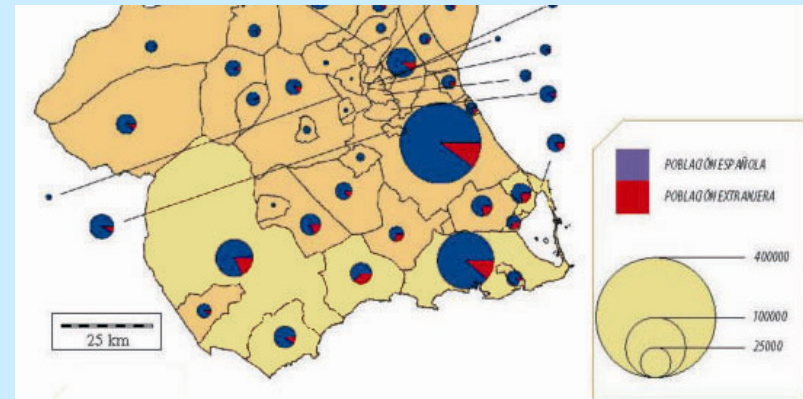
PRESENTATION OF MURCIA REGION

MAREMED

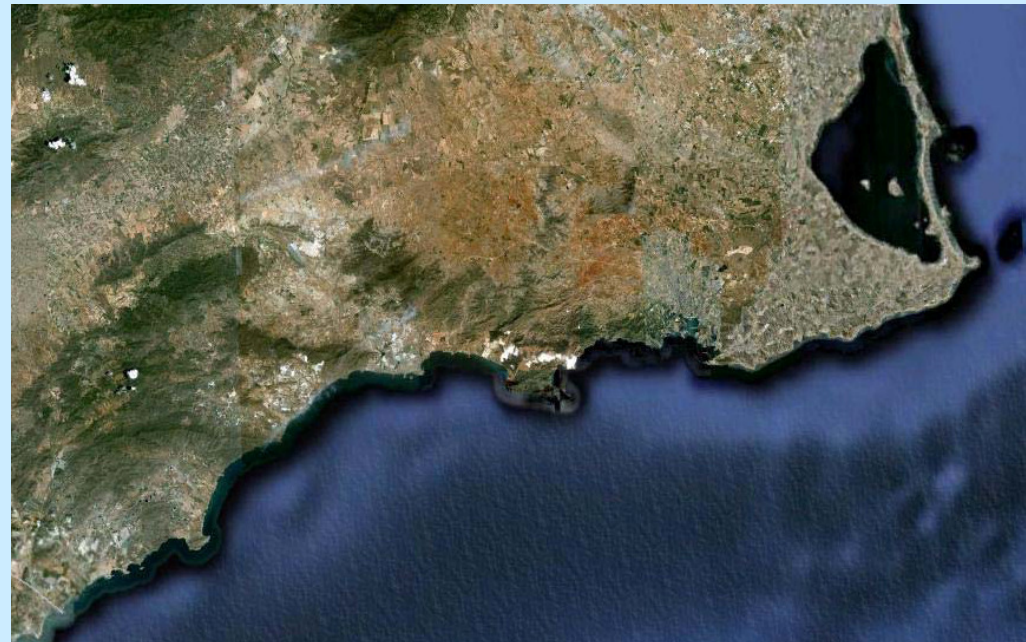
REUNION DE LANCEMENT / KICK OFF
MEETING

22-24 Juin, MARSEILLE, France

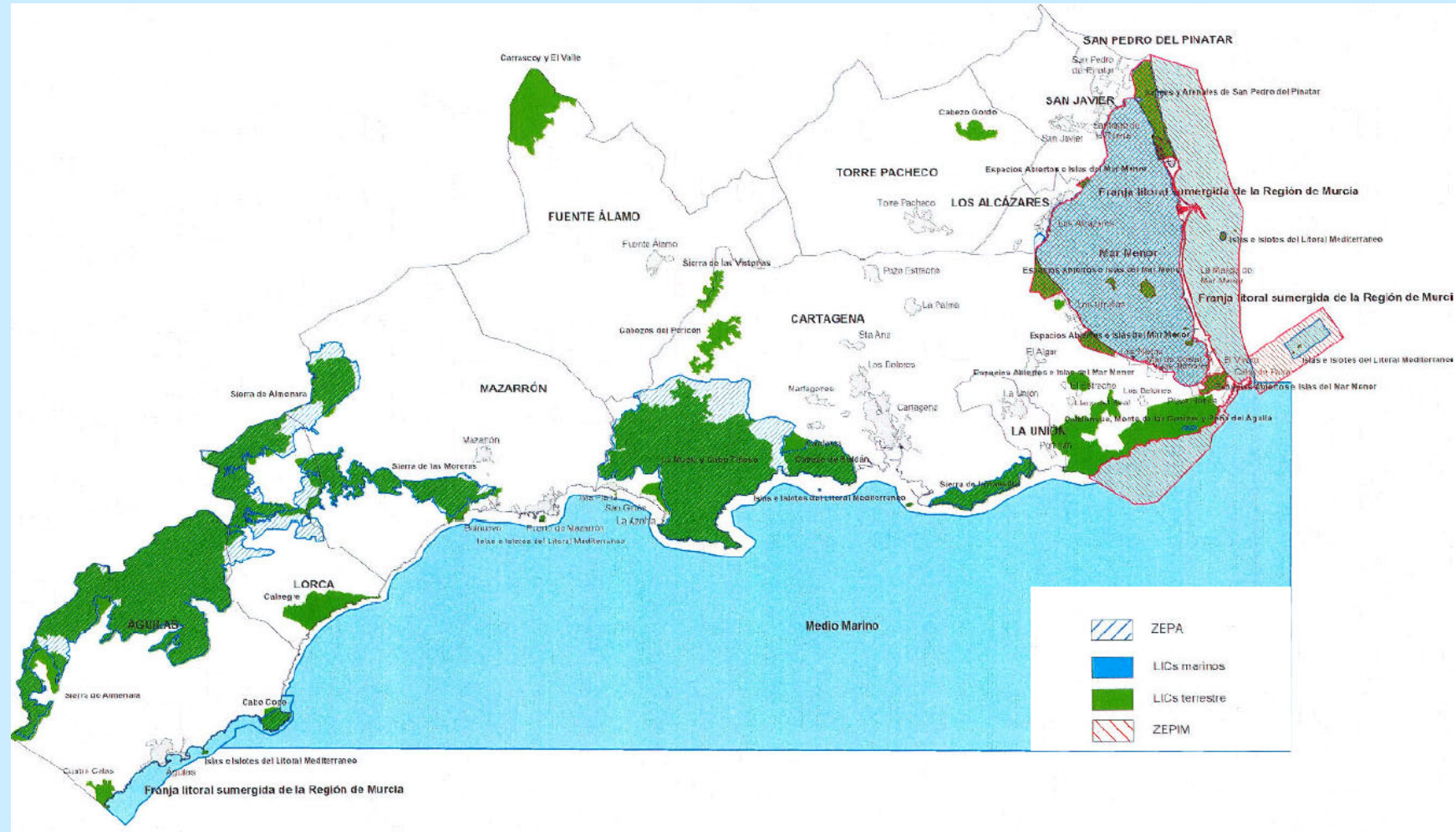
THE COASTAL ZONE OF MURCIA REGION



- Population: 1.446.109 inhab.
1/3 living in coastal zone
- Climate: Mediterranean,
semi-arid type
- Length of coastline: 274 km
- Landscape Evolution due to
change in land uses
- Beaches: 15 Blue Flags, 38
accessible

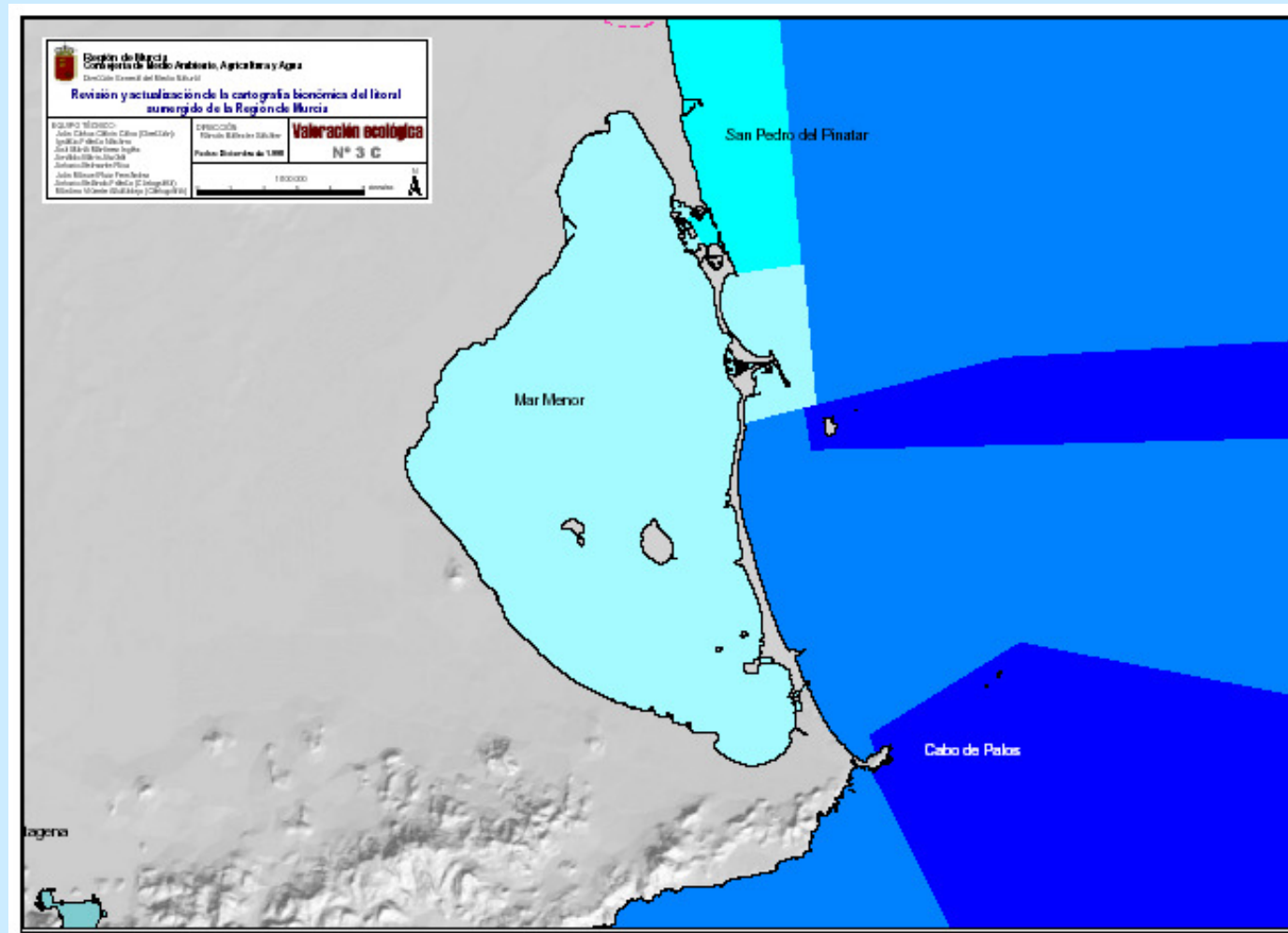


PROTECTION IN THE COASTAL OF MURCIA



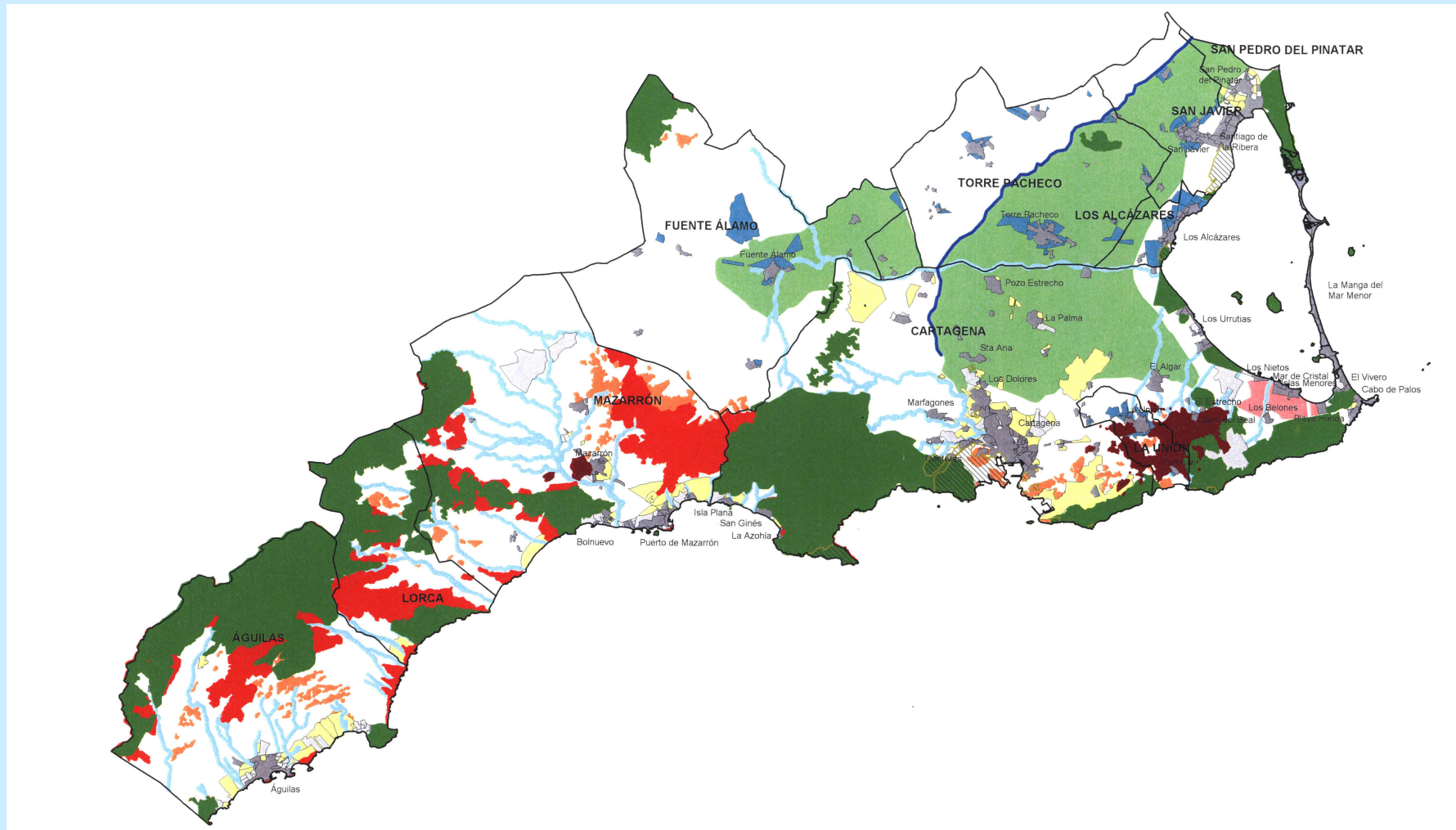
- 15 SCIs (3 maritimes), 9 SPAs
- Mar Menor = SPAMI

PROTECTION IN THE COASTAL OF MURCIA



Ecological value of the Mar Menor

PROTECTION IN THE COASTAL OF MURCIA



Demarcation of Coastal: Instrument for a Sustainable Spatial Model for Coastline

PORTS OF MURCIA REGION: CARTAGENA

- The Port of Cartagena is governed by the Public Body called THE PORT AUTHORITY OF CARTAGENA.
- This port is the 6th Port in Spain in freights and the 2nd one in bulk containers (22 million tons in 2009)
- This port is growing in Cruises Tourism
- The Port of Cartagena is shared with the Spanish Navy



PORT AUTHORITY OF CARTAGENA and MAREMED PROJECT

- The Port Authority of Cartagena will take part in MAREMED PROJECT developing researchs in order to control and minimize the risk of spills from land to sea



PORT AUTHORITY OF CARTAGENA Objectives

- Arrangement of the port service area and port uses.
- Planning, project, construction, maintenance and operation of port works and services and maritime signals.
- Management of port public property and maritime signals.
- Optimisation of the economic management and profitability of ports' capital resources.
- Promote the industrial and commercial activities related to shipping or port traffic.
- Co-ordination of operations of the different modes of transport in the port area.
- Rendering of general port services, authorisation and control of the main port services to carry them out in optimal conditions of efficiency, economy, productivity and security, without prejudice to the competition of other port authorities.

PORT AUTHORITY OF CARTAGENA

Enviroment

- The Port Authority of Cartagena is strongly committed to respecting the environment as shown by the different projects in which it is involved and the constant concern to comply with all the environmental regulations. Our objective is to include environmental considerations in all the Planning, Operation and Management procedures developed in the Port of Cartagena.

PORT AUTHORITY OF CARTAGENA

Enviroment

- The Port Authority of Cartagena has established an **Environmental Management System**, which was certified on 2 September 2004 by Lloyd's Register Quality Assurance, according to the UNE EN ISO 14001:1996 Regulation. This Environmental Management System is applicable to: "Administration, management and control of the services and infrastructures of the Port of Cartagena, in accordance with the current laws of the state-owned Spanish Port System

COMPETENCES OVER SEA MATTERS

- The Spanish Constitution, passed in 1978, develops a distribution of competences among the Central State and the Autonomous Communities. Some of these competences are related with sea and maritime competences.

COMPETENCES OVER SEA MATTERS. COMPETENCES OF AUTONOMOUS COMMUNITIES

- In this way, the Autonomous Communities may assume competences over these matters:
 - Ports of haven, recreational ports and airports and, in general, those which are not engaged in commercial activities
 - Inland water fishing, the selfish industry and aquaculture, shooting and river fishing

COMPETENCES OVER SEA MATTERS. EXCLUSIVE COMPETENCES OF STATE

- In the other side, the State holds exclusive competence over the following matters:
 - Sea fishing, without prejudice to the powers which, in the regulations governing this sector, shall be conferred on the Autonomous Communities
 - Merchant navy and the registering of ships; lighting of coasts and signals at sea; general purpose ports
 - Basic legislation of environmental protection

THE STATUTE OF AUTONOMY.

- The Statute of Autonomy of Murcia was passed in 1982. This rule (similar to Constitution in Central State) includes some competences that can be exercised by Murcia Region.
- Some of these competences are:
 - COASTAL PLANNING
 - MARITIME TRANSPORT BETWEEN PORTS INSIDE OF REGION OF MURCIA
 - PORTS WITHOUT GENERAL PURPOSE
 - INLAND WATER FISHING, THE SELLFISH INDUSTRY AND AQUACULTURE AND RIVER FISHING

ORGANIZATION CHART / MURCIA REGION

MINISTRY OF PUBLIC WORKS AND SPATIAL
PLANNING

GENERAL DIRECTORATE OF TRANSPORTS AND
PORTS

SUBDEPARTMENT OF PORTS AND COASTS

ORGANIZATION CHART / MURCIA REGION

MINISTRY OF AGRICULTURE AND WATER

GENERAL DIRECTORATE OF LIVESTOCK
FARMING AND WATER

SERVICE OF FISHING AND AQUACULTURE

BUDGET/ MURCIA REGION

COFINANCIEMENT MAREMED		
FEDER	88.500,00 €	75%
CONTREPARTIES PUBLIQUES	29.500,00 €	25%
TOTAL	118.000,00 €	

TOOLS FOR COASTAL MANAGEMENT - **sit**murcia:

<http://www.sitmurcia.es/>

WEBSITE ESTRUCTURE:

– Introduction, Planning Regulations to download, Help & FAQ

– Viewers

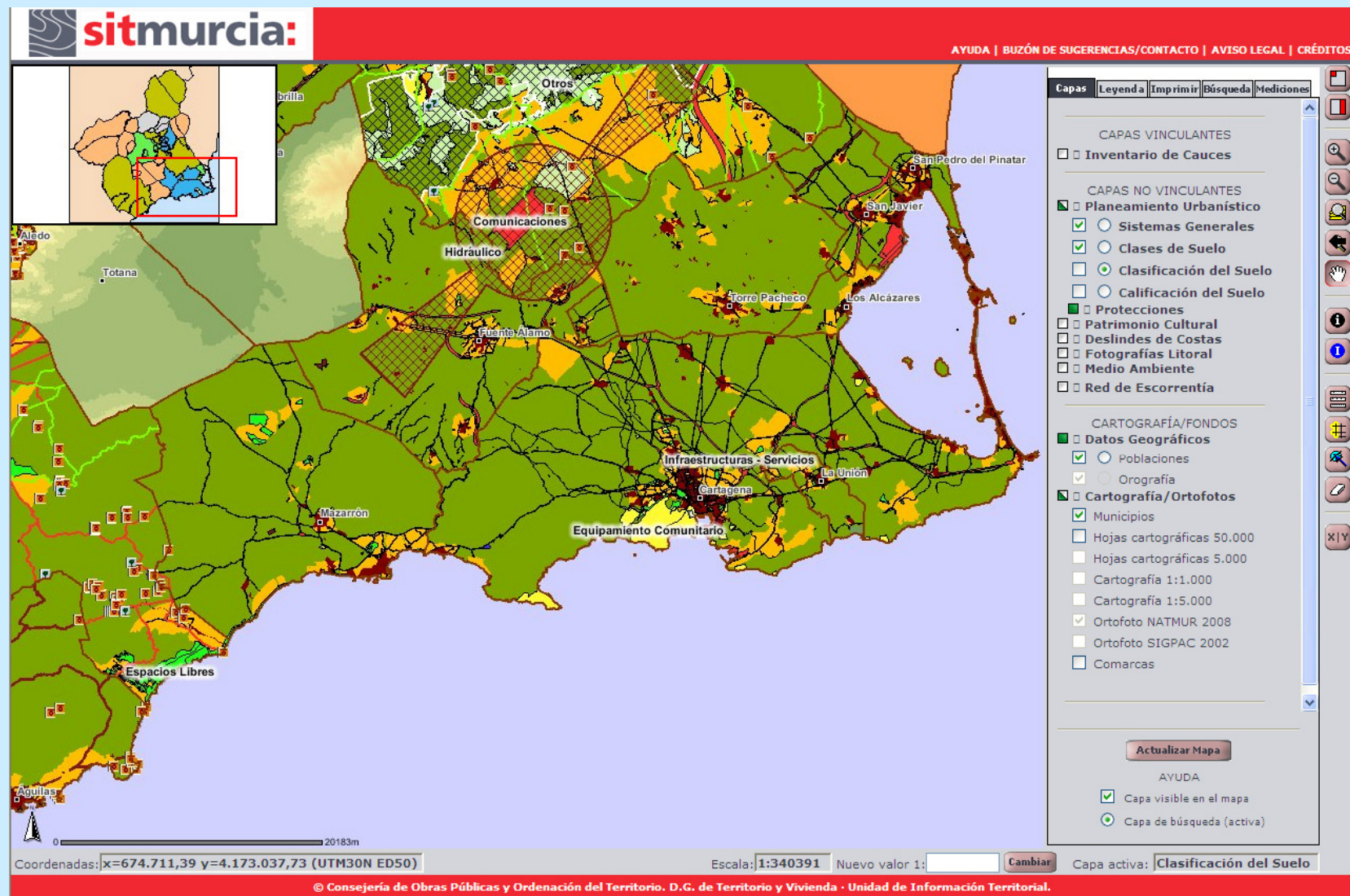
- MAIN VIEWER:

- Urban Planning
- Cultural Heritage protection
- Coastal Boundaries
- Coastal Images
- Environmental protection

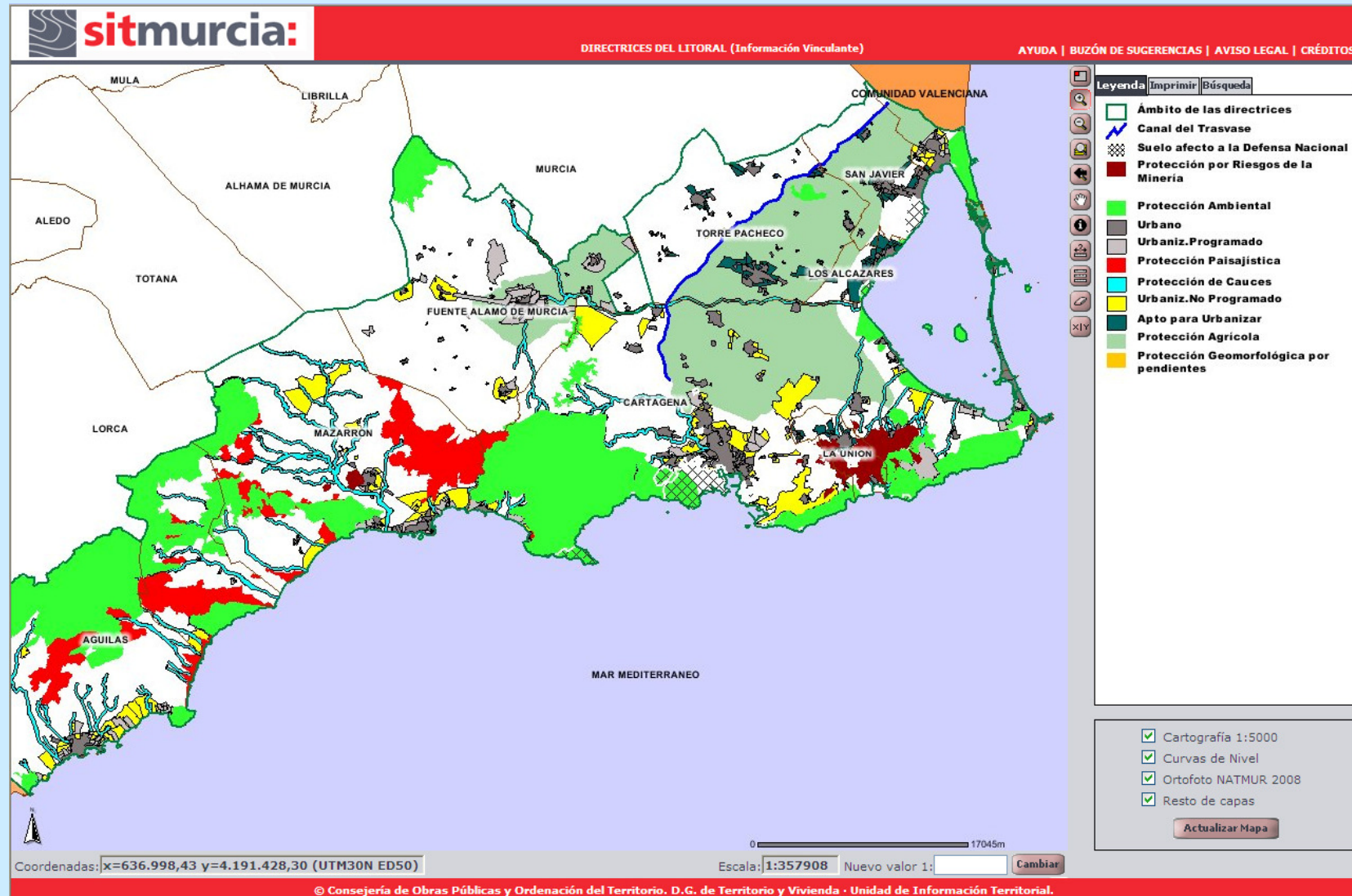
- DEMARCATION OF COASTAL VIEWER

- Urban Planning
- Environmental protection
- Landscape protection
- Areas of hillside Erosion and Watercourse's bed
- Zones with National protection
- Mining activities areas

sitmurcia: MAIN VIEWER



sitmurcia: DEMARCATION OF COASTAL VIEWER

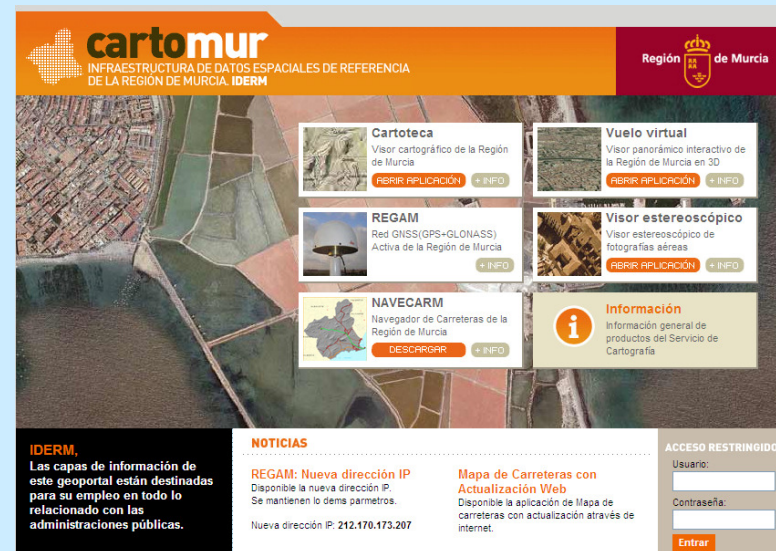


TOOLS FOR COASTAL MANAGEMENT - **cartomur**

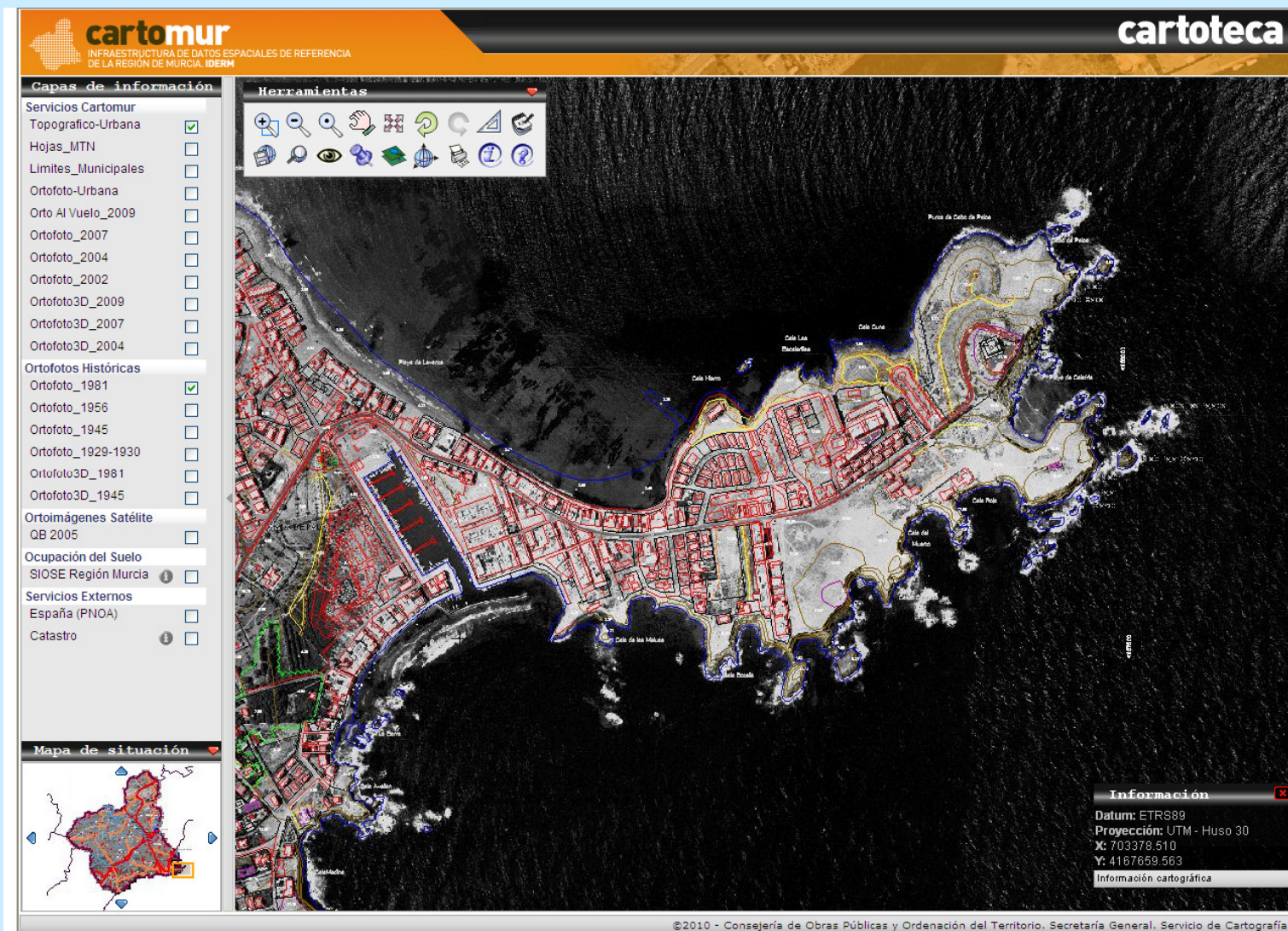
<http://www.cartomur.com/>

TOOLS FOR INTERACTIVE VIEW OF CARTOGRAPHY:

- CARTOTECA
- VIRTUAL FLIGHT
- STEREOPTICAL VIEWER
- REGAM
- NAVECARM



cartomur : cartoteca viewer



The screenshot displays the cartomur cartoteca viewer interface. The main map area shows a detailed view of a coastal urban area with various streets and buildings. The interface includes several panels:

- Capas de información** (Information Layers): A list of layers with checkboxes. The 'Ortofotos Históricas' section is expanded, showing a list of historical orthophotos from 1981 to 1945. The 'Ortofotos Históricas' section is currently selected, and the 'Ortofoto_1981' layer is checked.
- Herramientas** (Tools): A toolbar with various icons for map navigation and manipulation, including zoom in, zoom out, pan, and measure.
- Mapa de situación** (Location Map): A small inset map showing the location of the main map area within the region of Murcia.
- Información** (Information): A panel in the bottom right corner providing technical details about the map, including the datum (ETRS89), projection (UTM - Huso 30), and coordinates (X: 703378.510, Y: 4167659.563).

©2010 - Consejería de Obras Públicas y Ordenación del Territorio. Secretaría General. Servicio de Cartografía.

Thank you for your attention

DG Transport and Ports
Murcia Region

Email: transportesypuertos@carm.es
www.carm.es/copot